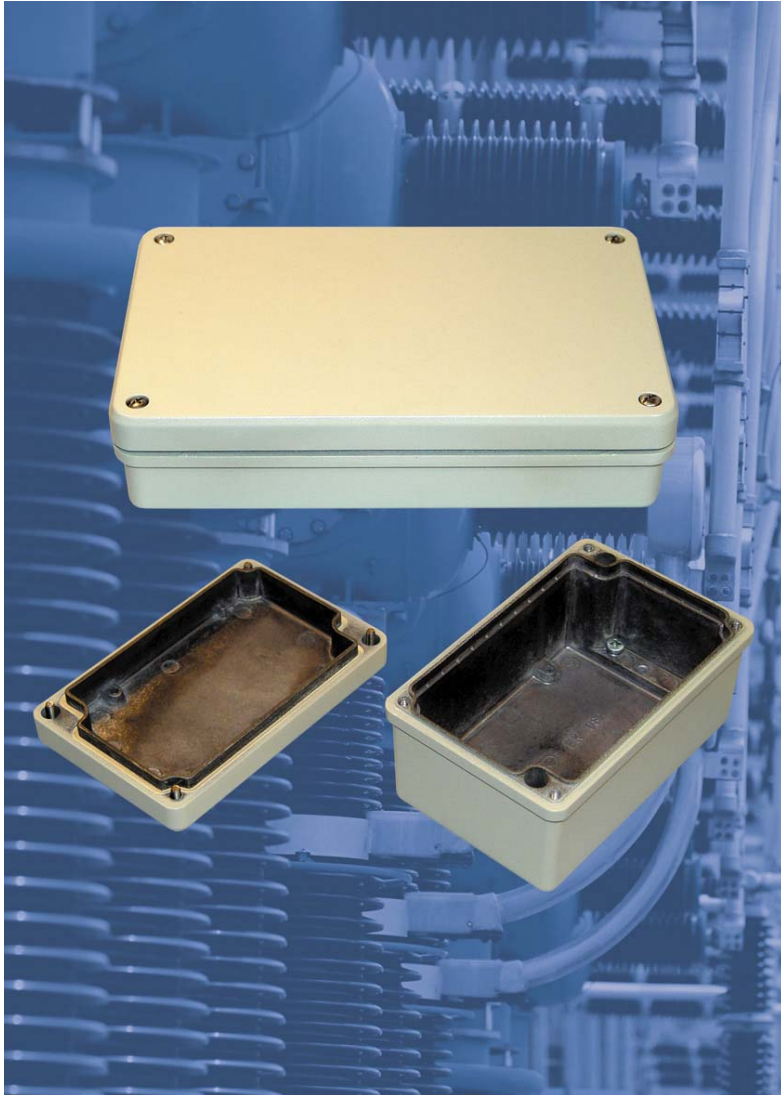


News Release

Release No: R2005.08

Standard IP 66 Aluminium EMC Enclosures from ROLEC



ROLEC's die-cast aluminium conFORM and conTROL enclosures have been specially designed to protect electronic and electrical systems against RFI/EMI interference.

High resolution picture (300dpi, CMYK, jpeg) on CD supplied



Standard IP 66 Aluminium EMC Enclosures from ROLEC

ROLEC's die-cast aluminium conFORM and conTROL enclosures have been specially designed to protect electronic and electrical systems against RFI/EMI interference, or to aid designers to meeting the EMC regulations, where their systems may have an emissions problem.

A high degree of EMC shielding is achieved in these enclosures by small pre-cast ribs, which are compressed into the lid on assembly. This mechanical contact negates the need for expensive EMC gaskets or contact fingers, thus reducing the cost considerably. Both ranges are also sealed to IP66 or, on request, IP67 with a special gasket.

The conFORM range is available in 14 sizes, ranging from 79x84x44mm to 266x166x100mm. The conTROL range features a deeply recessed lid, which provides protection for push buttons and controls, and is available in 4 standard sizes ranging from 129x84x55mm to 179x84x78mm. All versions are powder coated in silky grey RAL 7032.

All assembly dimensions conform to industry standard sizes. Accessories for both ranges include internal mounting plates, external mounting brackets, internal and external hinges, panel mounting kits and terminal mounting rails. Volume prices start from just £11.

ROLEC offers a full customising service on these enclosures with CNC milling, drilling, silk-screen printing, assembly of cable glands and terminals and much more, providing a fully finished housing ready for fitting the components.

More information on these enclosures can be found on ROLEC's website at

www.rolec-enclosures.co.uk

Release No: R2005.08 Ends (word count 228)

Contact: **Robert Cox**