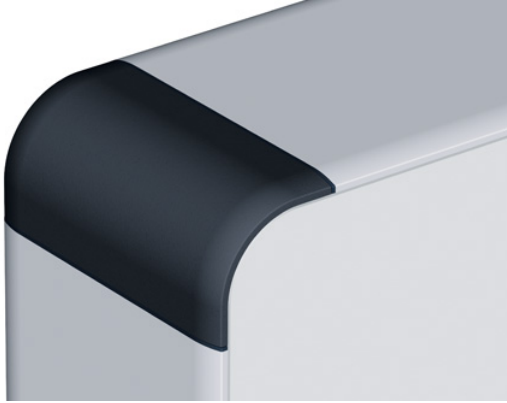


713.009.XXX
profiPANEL Corner Covers RAL 9005



technical data

Material	Polyamide
Colour	Deep black RAL 9005

profiPANEL DESIGN COMMAND ENCLOSURE

Up to IP 65

Thanks to the option of combining the three basic profile depths, profiPANEL enables a total of eight mounting depths to be provided for (PPD 150 is available, as required, as a basic profile or as a profile combination consisting of a 90 mm and a 60 mm basic profile). The connection of 60 or 90 mm deep desk also offers additional options for extended internal mounting. Thanks to this wide range of depths, profiPANEL therefore enables almost every conceivable configuration for the internal mounting of components to be realised. The enclosure front of the profiPANEL system is manufactured made-to-measure and provides for the almost edgeless and flush mounting of a front plate, which is permanently connected to the enclosure. Appropriate cut-outs for a display, switches and more are included in the service provided by ROLEC and are produced ex-works to meet customer specifications. A desk is a clever solution when there's not enough space in the control enclosure or you need additional buttons. The profiPANEL series therefore includes two desk models, 60 and 90 mm deep (D), for internal mounting. The desk adapter offers plenty of space for routing HDMI or DVI cables or network plugs. The desk is 200 mm high ex works. Non-standard dimensions are available on request. The rear wall of the desk is bolted on as standard. An ergonomically designed profile handle system is available for even more convenient handling, particularly with the deeper profile versions. There is also a 450-mm wide latching keyboard holder as an alternative to the desk, which can be enhanced and/or extended by an additional mouse holder.

Enclosure sizes

Made-to-measure as per customer's needs

L x W x H max. 150 x 150 x 360 mm

800 x 800 x 60-300 mm

Additional information

Minimalist, multi-variable design for modern machines

Profile enclosure – made-to-measure

Three basic profiles (60/90/150 mm). Eight enclosure depths: 60/90/120/150/180/210/240/300 mm

Front plate is permanently connected to the enclosure, mounted almost edgeless and flush

Enclosure

Extruded aluminium

PA corner covers, RAL 7035, 9005, 3020 or 5017

Standard front plates: aluminium 3 mm, Al Mg 1, silver anodised

Optional: Finished front plates, lasered, engraved or printed

Optional: Profile handle, PA, RAL 7035, extruded aluminium

Enclosure lock Basic profiles: locks and exterior hinges, optionally bolted

Enclosure lock profile combinations: locks and exterior hinges

Fastening

Basic profile with panel coupling, all other profiles with coupling on the ROLEC suspension arm system
profiPLUS 50

Internal mounting

Slide-in contour for spring nuts M4/M5



<https://www.rolec-enclosures.co.uk>



Our *passion* is enclosures.

Ingress protection
Up to IP 65 / EN 60529

Coating
Anodised

ROLEC service
Avail of our Full Service Offer for installation-ready enclosures

Configuration
Use our handy enquiry form to configure your individual control enclosure